



AVON | WEST
S T R A T F O R D

The Gottle

Square Footage: 1,554

Bedrooms: 3

Bathrooms: 2.5

Stores: 2

Lot Width: 40 ft.

3 Bedroom, 2 storey, 2 1/2 baths, oversized single garage door, open concept main floor, second floor laundry, Master c/w oversizd walk in closet and ensuite.

**Bromberg
Homes**

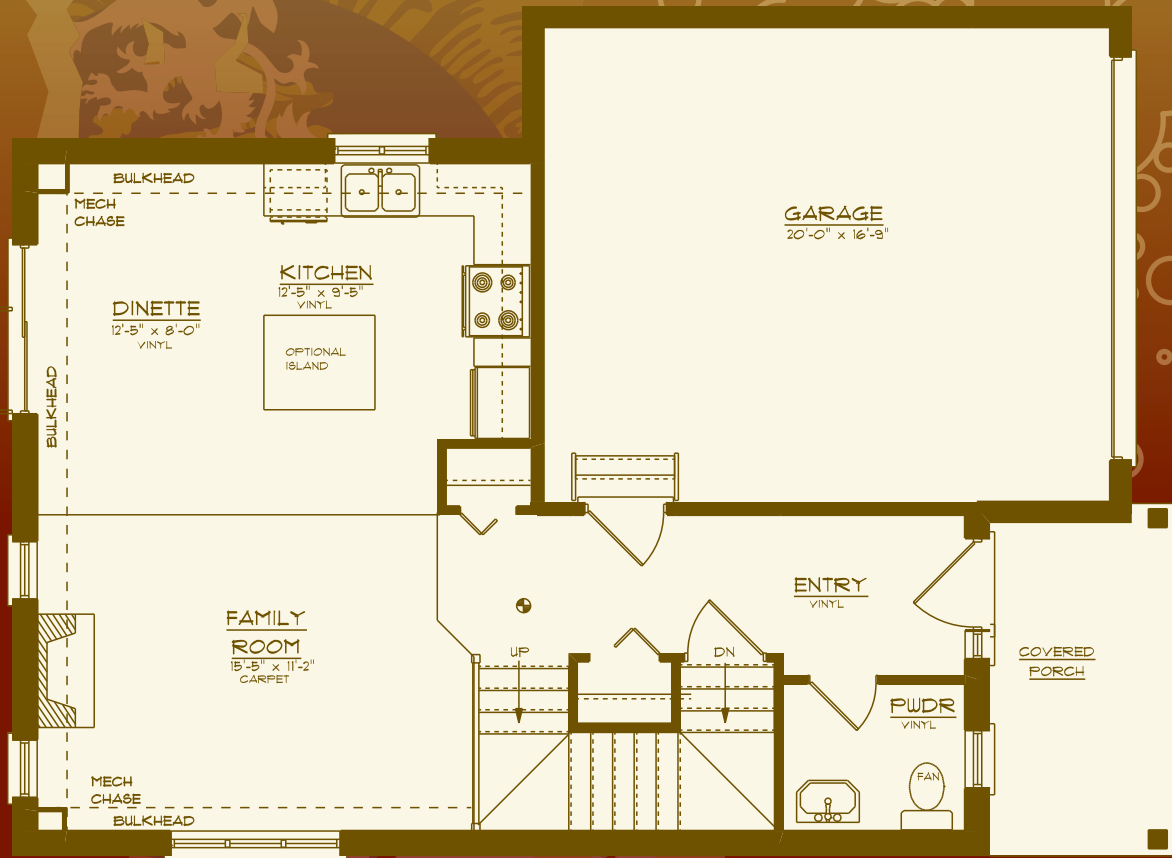
Division of Werner Bromberg Ltd.



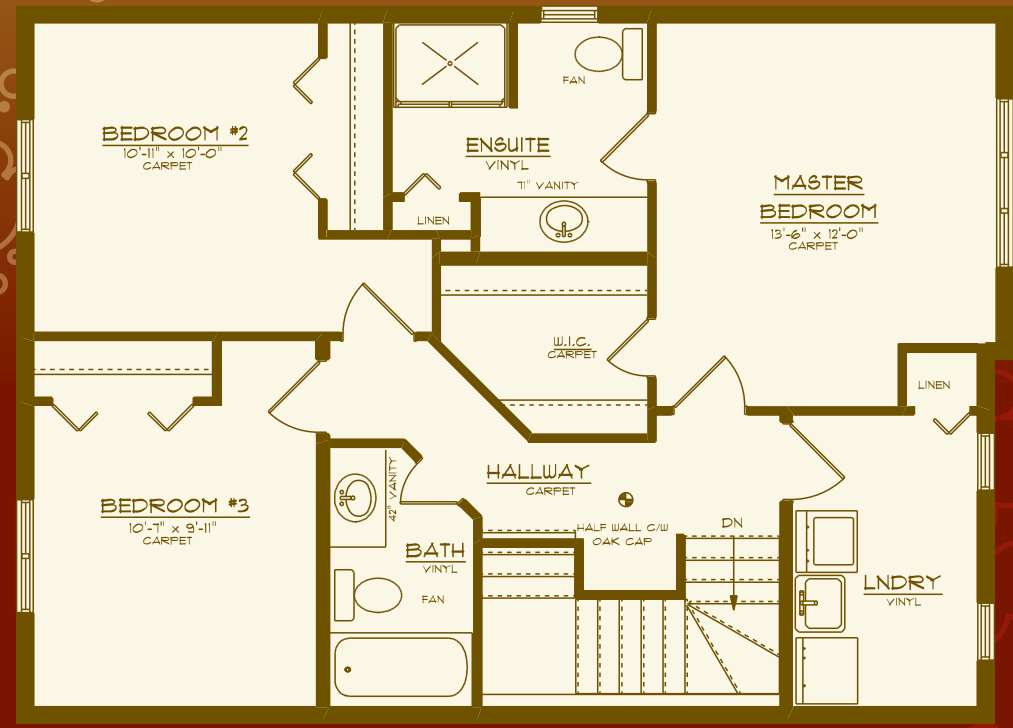


The Gottse 1,554 sq. ft.

AVON | WEST
STRATFORD



Main Floor
672 Sq. Ft.



Upper Floor
882 Sq. Ft.

All drawings are artist concepts of the final product and may be revised and/or improved as necessitated by Architectural controls. All floor plans are approximate dimensions. Floor areas shown include "open to below" but do not include garage or basement areas. E. & O. E.



Division of Werner Bromberg Ltd.

www.bromberghomes.com